



# MAXPLUG®

## QUICK-SET HYDRAULIC MORTAR STOPS LEAKS UNDER PRESSURE

### Description

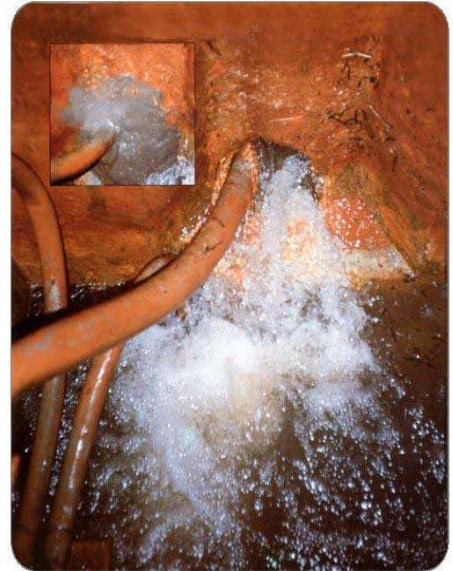
**MAXPLUG** is a quick-setting hydraulic cement that instantly stops running water from cracks, holes or other openings in concrete and masonry, once it sets. It does not contract and sets within three to five minutes depending on the temperature. It only requires water for mixing.

### Uses

- To seal leaks instantly in concrete surfaces and solid masonry.
- For emergency repairs on water pipes. For broken pipes, sometimes MAXPLUG will even work when the pipes are under pressure.
- Emergency plugging of gas leaks.
- To anchor bolts and other accessories that require immediate use.
- In basements, tunnels and sewers, to stop water under pressure.

### Advantages

- The coating allows the base to transpire and thereby eliminates water vapour.
- Stops leaks and waterproofs the surface to which it is applied.
- Does not contract, or become weak due to its exothermic reactions.
- It increases in volume. Its rapid set, three to five minutes, may be controlled (either speed up or slowed down) by adding warm or cold water. The setting may even be instantaneous.
- It is the proper maintenance material for homes and industry.
- It is not toxic when it comes into contact with drinking water.
- Its mechanical properties are comparable to those of concrete, and in some cases even superior.
- It sets under water.



### Applications

- To seal leaks instantly in concrete surfaces and solid masonry.
- For emergency repairs on water pipes. For broken pipes, **MAXPLUG** will even work when the pipes are under pressure.
- Emergency plugging of gas leaks
- To anchor bolts and other accessories that require immediate use.
- In basements, tunnels and sewers, to stop water under pressure.

### Advantages

- Stops leaks and waterproofs the surface to which it is applied.
- Does not contract, or become weak due to its exothermic reactions.
- It increases in volume. Its rapid setting, three to five minutes, may be controlled (either sped up or slowed down) by adding warm or cold water. The setting may even be instantaneous.
- It is the proper maintenance material for homes and industry.
- It is not toxic when it comes into contact with drinking water.
- Its mechanical properties are comparable to those of concrete, and in some cases even superior.
- It sets under water.

### Tools

**MAXPLUG** can be applied with a trowel, a spatula or even by hand. As any abrasive material, make sure to use protective rubber gloves when applying by hand.

### How to mix

Mix only the amounts of **MAXPLUG** that can be applied in three minutes; if it is a water leak, mix only the amount of material

that can be used with your hand. Use a plastic or rubber container, fill with **MAXPLUG** as needed, and add water slowly until it has the consistency of cement mortar. One kilogram of **MAXPLUG** requires 280 cc of water.

### How to Use

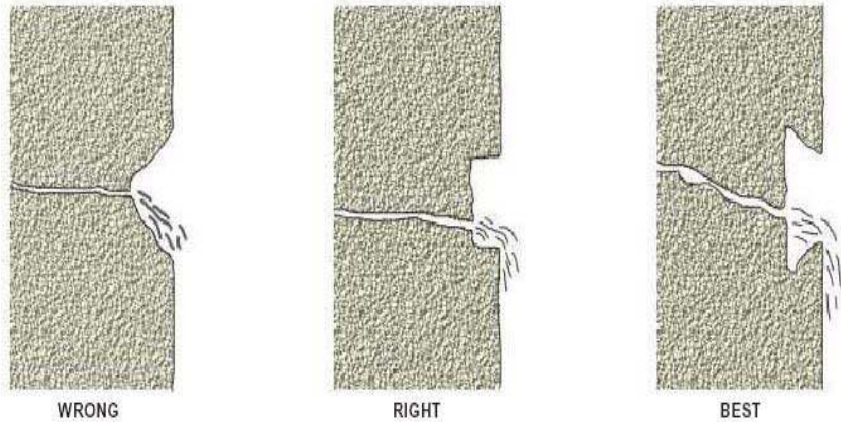
Normal weather, **MAXPLUG** takes between three to five minutes to set, depending on the temperature of the product, the water and atmospheric condition. Three to five minutes setting time is for temperatures in the 18° to 20° C range.

Warm weather, when temperatures are high and **MAXPLUG** sets very quickly, cold water must be used to delay the setting time, allowing you time to apply the material.

In extreme cases, keep the product in the shade and add ice to the mixing water.

Cold Weather, at a low temperatures, use warm or hot water to prepare maxplug mixes. At extremely low temperatures, i.e., below 0° C, heat the material and use hot water.

Surface Preparation. All cracks should have a minimum depth of 2 centimetres and an opening of 1.5 to 2 centimetres. Make a square-shaped cut, preferably dovetail to the surface to which the material is to be applied; avoid the "V" shape. See drawing above. Clean the surface until it is free of all loose materials; wet the surface if water is not present at the time of application. Use **MAXPLUG** without force.



### Sealing Concrete Walls and Slabs

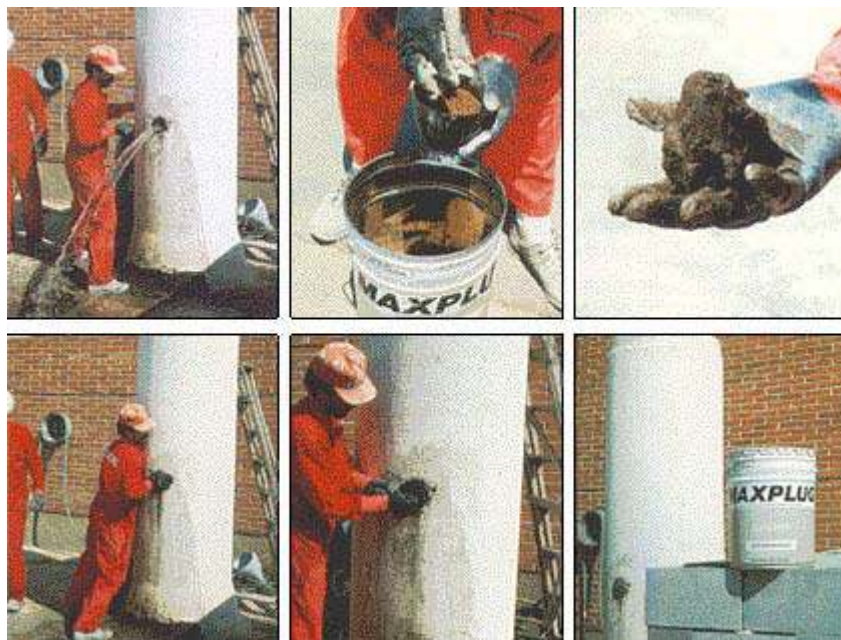
Once the surface has been prepared by removing the loose concrete from the crack and cutting to a depth of 5 cms., apply maxplug in small amounts. Mix only the amount of material that can be applied by hand; do not pour the material in place; always use your hands. Wait until it becomes warm before applying, immediately remove the excess material and continue until the crack is finished. Under great pressure, in tunnels and basements do not try to plug up the crack at once.

Maxplug is ideal to anchor bolts and metal fixtures to concrete.

### Sealing concrete slabs and walls

This is very common in basements, elevator shafts, swimming pools and water towers. Make sure there is an opening of at least 2 x 3 cm., and seal it with **MAXPLUG** making a waterproof cove at the joint of floor and wall.

## Sealing Process



### Leaks in cracks or joints

Once the surface has been prepared by removing the loose concrete from the crack and cutting to a depth of 5 cms., apply MAXPLUG in small amounts. Mix only the amount of material that can be applied by hand; do not pour the material in place; always use your hands. Wait until it becomes warm before applying, immediately remove the excess material and continue until the crack is finished. Under great pressure, in tunnels and basements do not try to plug up the crack at once.

### Expansion joints.

MAXPLUG, a rigid product once it has set is not the ideal material for this type of work since expansion joints are subject to constant movement. Nevertheless, it is used to stop the water in expansion joints; later, when it is dry, the expansion joint is made with a flexible material.

MAXPLUG is ideal to anchor bolts and metal fixtures to concrete.

### Technical data

#### Mechanical resistance

AGE	FLEXURAL STRENGTH (Kp / cm <sup>2</sup> )	COMPRESSION STRENGTH (Kp / cm <sup>2</sup> )
30 minutes	12	38
3 days	37	225
7 days	57	362
28 days	52	407

Test No 14-1/83-M INCE, Madrid.

### Product requirements.

One kilogram of MAXPLUG fills approximately 0.6 cubic decimeters.

### Packaging

25 kilogram drums and 5 kilogram cans.

**Caution**

As all cement products, MAXPLUG is abrasive a protective rubber gloves must be used to prepare the mixture and apply it. If any of the mixture gets into the eyes, rinse thoroughly with clean water, but do not rub. If irritation continues, consult a doctor.

**Expansion Joints**

Maxplug, a rigid product once it has set is not the ideal material for this type of work since expansion joints are subject to constant movement. Nevertheless, it is used to stop the water in expansion joints; later, when it is dry, the expansion joint is made with a flexible material.

Maxplug is ideal to anchor bolts and metal fixtures to concrete.

**Guarantee** The information contained in this leaflet is based on our experience and technical knowledge, obtained through laboratory testing and from bibliographic material. DRIZORO reserves the right to introduce changes without prior price. Any use of this data beyond the purposes expressly specified in the leaflet will not be the Company's responsibility unless authorised by us. The data shown on consumptions, measurement and yields are for guidance only and based on our experience. These data are subject to variation due to the specific atmospheric and jobsite conditions so reasonable variations from the data may be experienced. In order to know the real data, a test on the jobsite must be done, and it will be carried out under the client responsibility. We shall not accept responsibility exceeding the value of the purchased product. For any other doubt, consult our Technical Department. This version of bulletin replaces the previous one.

© DRIZORO S.A. All rights reserved.

© SwebpDri International Pty Ltd. All rights reserved.

	<b>SwebpDri International</b>	<b>ABN 60 000 046 000</b>
	<b>ADDRESS</b>	<b>TEL: + 61 2 9771 0011</b>
	<b>PO BOX 694</b>	<b>FAX: + 61 2 9771 0111</b>
	<b>PADSTOW NSW 2211</b>	<b>WEB: www.swebpdri.com.au</b>
	<b>AUSTRALIA</b>	<b>EMAIL: info@swebpdri.com.au</b>
	<b>NATIONAL HOTLINE: 1300 303 301</b>	<b>NATIONAL FAXLINE: 1300 369 932</b>