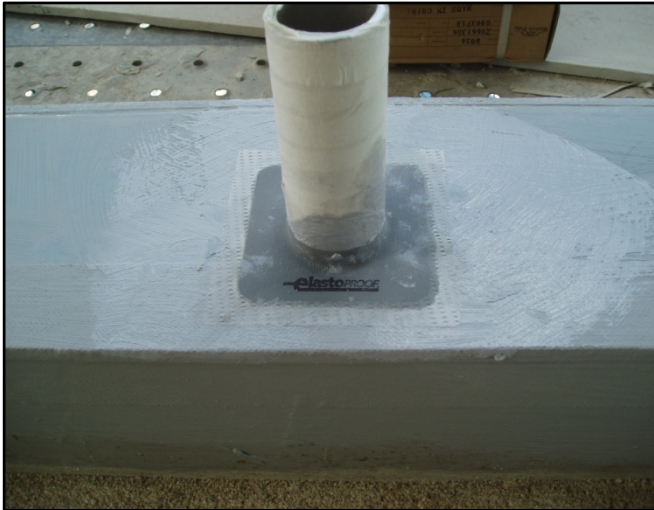


BASE COLLARS

www.gripset.com

TECHNICAL DATA SHEET

techenquiries@gripset.com



Description

The Elastoproof Collars ensure effective detailing and enhanced sealing around penetrations such as pipes, drainage outlets, cabling and any substrate fixtures by protecting against movement, vibration and cracking. Elastoproof Collars provide a permanent tight seal against water ingress enabling penetrations to withstand a variety of movement conditions without compromising the membrane seal

Features & Benefits

- * Ensures a seamless elastic seal around pipes and penetrations
- * Bridges gap between penetration and surface
- * Fast effective application
- * Enables 100% elastic recovery when exposed to movement
- * High strength and excellent tear resistance
- * Long term sealing protection at volatile areas
- * Eliminates need for sealants and potential adhesion issues with sealant products
- * Compatible and guaranteed with all Gripset membrane, adhesives and coatings

Application

- * Suitable for commercial, industrial, residential and general applications

Uses

- * Wet areas, showers, laundries
- * Roofs, decks, balconies, podiums
- * Planter boxes, garden beds
- * Ponds, tanks, water features
- * Waterproofing pipes and penetrations wherever Gripset membranes are to be applied

Installation

- * Measure the diameter of the pipe or penetration to be sealed. Calculate 50% of the measured diameter as this will be the diameter of the hole to be cut in the Collar. E.g. Pipe with 40 mm diameter, a 20 mm hole will be cut into the Collar.
- * Fold the Collar in half so the marked circles on the Collar face are exposed as a semi-circle. Using these markings as a guide, follow the semi-circular lines and cut the measured section of the central rubber area out to form a circular hole. Fit the Collar over the pipe/penetration to ensure it provides a tight fit around the circumference. Remove Collar and adjust as necessary
- * Apply a liberal coat of Gripset membrane to the surface around the circumference of the pipe/penetration, ensuring enough membrane is applied to cover 100% of the rear Collar profile.
- * Slide the Collar over the neck of the pipe/penetration and embed into the wet membrane bed, ensuring the fabric edges of the Collar are fully wetted into the membrane film. Using a flat spatula or brush, ensure all creases or air pockets behind fabric edges are pushed out. When applying, ensure enough wet membrane is applied behind the Collar otherwise proper adhesion will not be achieved.

Note – Collars must be bedded into a wet film of the membrane. Do not allow membrane to skin or dry before bedding Collars in position. When applied, the Collar should be tightly fitted around the circumference of the pipe/penetration and firmly bonded into position, showing good adhesion to the surface.

- * Remove any excess membrane on the top surface of the Collar by either brushing over the face of the sleeve or onto the surface.

Packaging

Small Collars

Size: 120mm x 120mm

- * Suitable for pipes/penetrations up to 50mm

Medium Collars

Size: 250mm x 250mm

- * Suitable for pipes/penetrations up to 110mm

Large Collars

Size: 300mm x 300mm

- * Suitable for pipes/penetrations up to 150mm

Precautions

- * Not compatible with solvent based materials, e.g. adhesives, sealants or coatings
- * Do not apply when surface temperature is below 5°C or above 30°C.
- * For further information about this product contact technical department of Gripset Industries.

Notes

It is recommended before commencing the application; that adhesion of products to be used (e.g. primers, membranes, coatings adhesives etc) is tested over a typical area of the prepared surface to ensure satisfactory adhesion. It is the responsibility of the applicator to carry this out and accept the substrate suitability before any application starts. Gripset Industries offers a service for pre testing adhesion to surfaces for large commercial areas or unusual substrates. For further details contact Gripset Industries.

Details contained in product data sheets are general. For any situation or items not covered in this data sheet, it is the responsibility of the applicator to check with Gripset Technical Services before commencing the application. A written confirmation will then be issued by Gripset Technical Services.

BASE COLLARS

www.gripset.com

TECHNICAL DATA SHEET

techenquiries@gripset.com

Gripset Industries Pty Ltd

ABN: 41 094 789 929

Telephone: +61 (8) 8124-7300 or 1800 650 435

Email: techenquiries@gripset.com

Website: www.gripset.com

Product Disclaimer

This Product Data Sheet (PDS) summarises our best knowledge of the product, including how to use and apply the product based on the information available at the time. You should read this PDS carefully and consider the information in the context of how the product will be used, including in conjunction with any other product and the type of surfaces to, and the manner in which, the product will be applied. Our responsibility for products sold is subject to our standard terms and conditions of sale. Gripset Industries does not accept any liability either directly or indirectly for any losses suffered in connection with the use or application of the product whether or not in accordance with any advice, specification, recommendation or information given by it.
